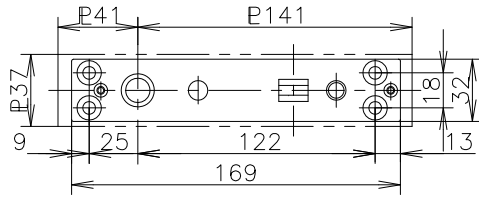
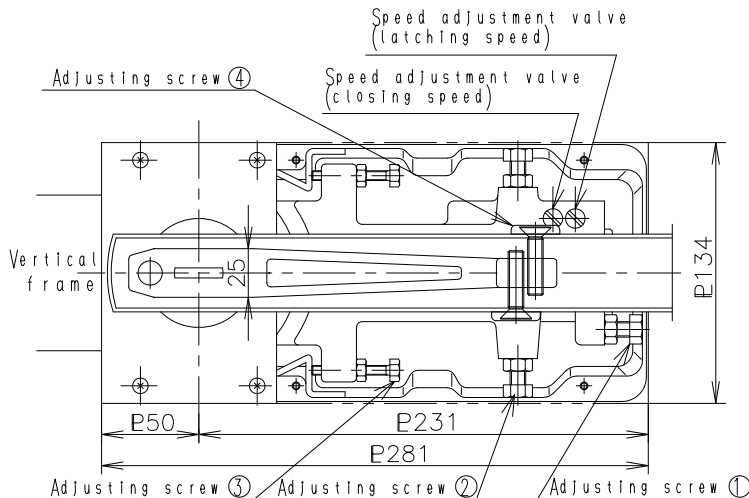
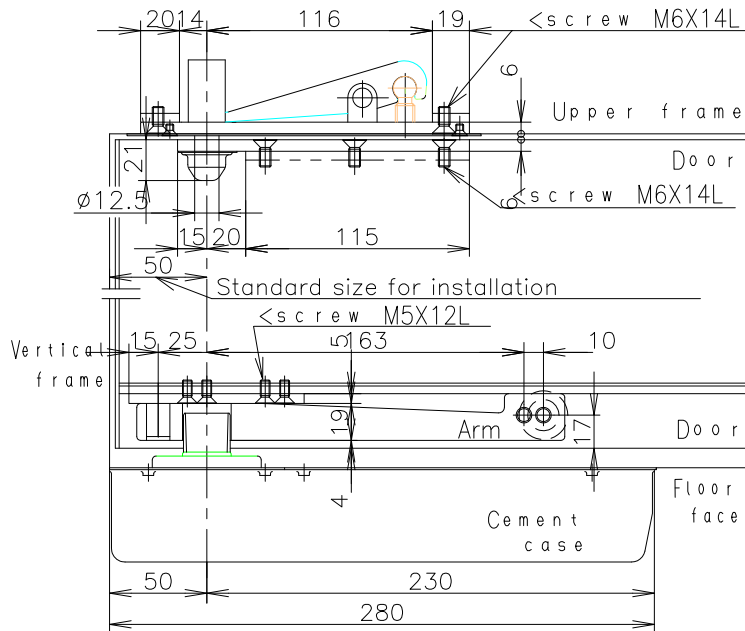
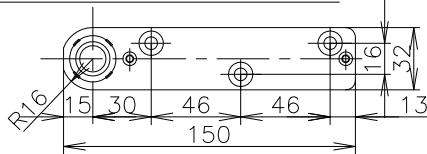


Top pivot (upper frame side)



Top pivot (door side)



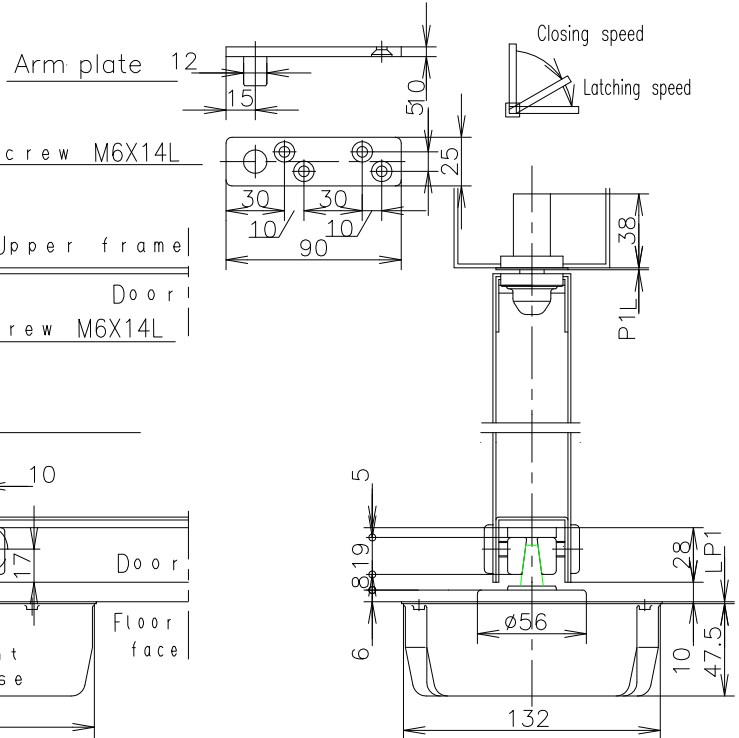
Dimension is indicated by m/m unit

OPENING SYSTEM OF DOOR	MODEL NUMBER		FITTING SIZE AND WEIGHT	
			WIDTH X HEIGHT (mm)	DOOR WEIGHT (Kg)
CENTER HUNG PAIR DOORS OPENED OF IN DOUBLE ACTION  MAXIMUM OPENING ANGLE 113° HOLD OPEN ANGLE 90°	203N	NON —HOLD	950X2100	180
	S203N	90° HOLD		

## NOTE

TO PROTECT ANY PRODUCT DAMAGE DURING OPERATIONS FOLLOW THE INSTRUCTIONS BELOW WHEN 203N/S203N FLOOR HINGE IS APPLIED TO DOOR OVER 150KGS DOOR WEIGHT.

- 1 Adjust 1st closing speed over 4 seconds during 1st closing speed range.
- 2 Do not adjust latching speed (2nd closing speed) extremely slower than closing speed.
- 3 Use door stopper at maximum door opening position.



## ADJUSTMENT OF DOOR POSITION AND DOOR CLOSING SPEED.

Adjustment is made by taking off floor plate (backside)

1. Adjusting screws ( 1 2 3 ) are loosened.
2. Adjustment of space between door and vertical frame is made by adjusting screws ( 1 3 ) and tightening lock-nuts of adjusting screws ( 1 3 ).
3. Adjustment of closing position of door is made by adjusting screw 4
4. For further adjustment, after loosening adjusting screw 3 and its lock-nut, adjustment is made by adjusting screw 2 and tightening adjusting screw 3 and its lock-nut.
5. Adjusting screw 2 and its lock-nut are tightened.
6. Adjustment for both closing speed and latching speed is made by turning valves clockwise for slower speed and turning unclockwise for faster speed.